



ExcelPlas

T E S T R E P O R T

Client: Basic Expert Pty Ltd

Address: 105 Wellington St, St Kilda, 3182, Victoria

Investigation Report # 8520/1

Analysis of ACP Cladding Sample

Revised 12/03/2020

Investigated By:

Michael Huang

M Polymer Eng., Laboratory Technician, ExcelPlas Pty. Ltd.

Reviewed By:

Jackson Hosking

B.Sc., Laboratory Technician, ExcelPlas Pty. Ltd.

Date Reissued:

12 March 2020

Excelplas Polymer Technology and Testing
P.O Box 147, Moorabbin,
VIC 3186, Australia
www.excelplas.com
Ph: +61 3 9532 2207

COMMERCIAL-IN-CONFIDENCE



Excelplas Polymer Testing and Technology
P.O Box 147, Moorabbin, VIC 3186, Australia
www.excelplas.com
Ph: +61 3 9532 2207

TASK DETAILS

ExcelPlas Job Number:

8520

Report prepared for:

Oscar Salt

Company Name:

Basic Expert Pty Ltd

Company Address:

105 Wellington St, St Kilda, 3182, Victoria

Company Contact Details:

M: +61 412 270 854 | T: 1300 077 959 | E: oscar.salt@basic.expert

Request Date:

25 February 2020

Client PO Reference:





SAMPLE DETAILS	
Location of Cladding:	N/A
Sample Description:	
ExcelPlas Sample ID	Description
8520/1	White front and White back with White Core Alpolic NC

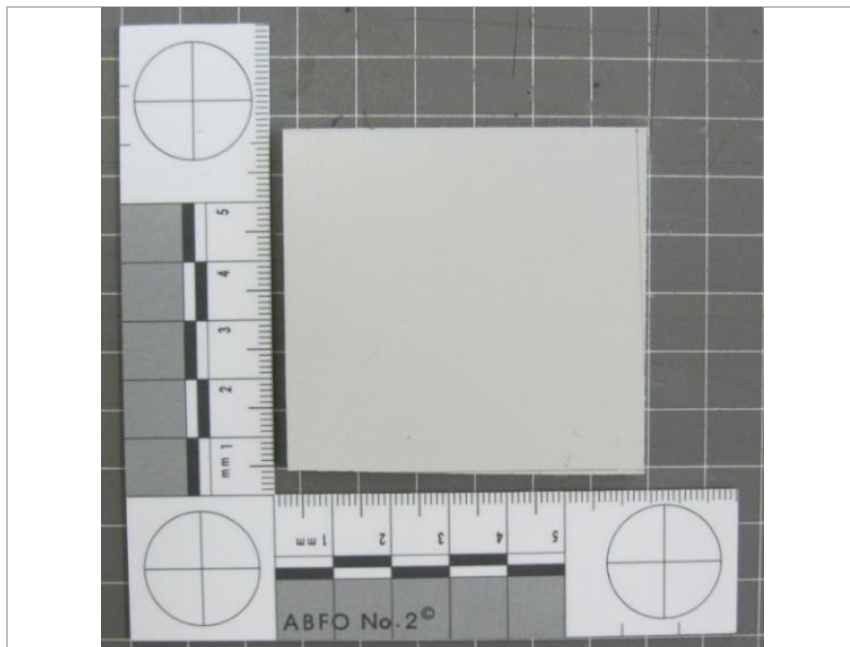


Figure 1. Cladding Sample 8520/1 as supplied to ExcelPlas





FOURIER TRANSFORM INFRARED SPECTROSCOPY

Methodology: Fourier Transform Infrared (FT-IR) spectroscopy was used for ‘finger-printing’ for material identification of the polymer and filler components. The FT-IR analysis was performed according to ASTM E573 ‘Standard Practices for Internal Reflection Spectroscopy’ using an Alpha Measurement Module by Bruker Optik. Smaller samples of the core were cut from the larger sample.

Spectra of the core were searched against an internal library database for identification.

IR Spectral Results:

ExcelPlas Sample ID	Polymer component	Inert components
8520/1	Polyvinyl acetal (trace levels)	Aluminium Hydroxide and Calcium Carbonate

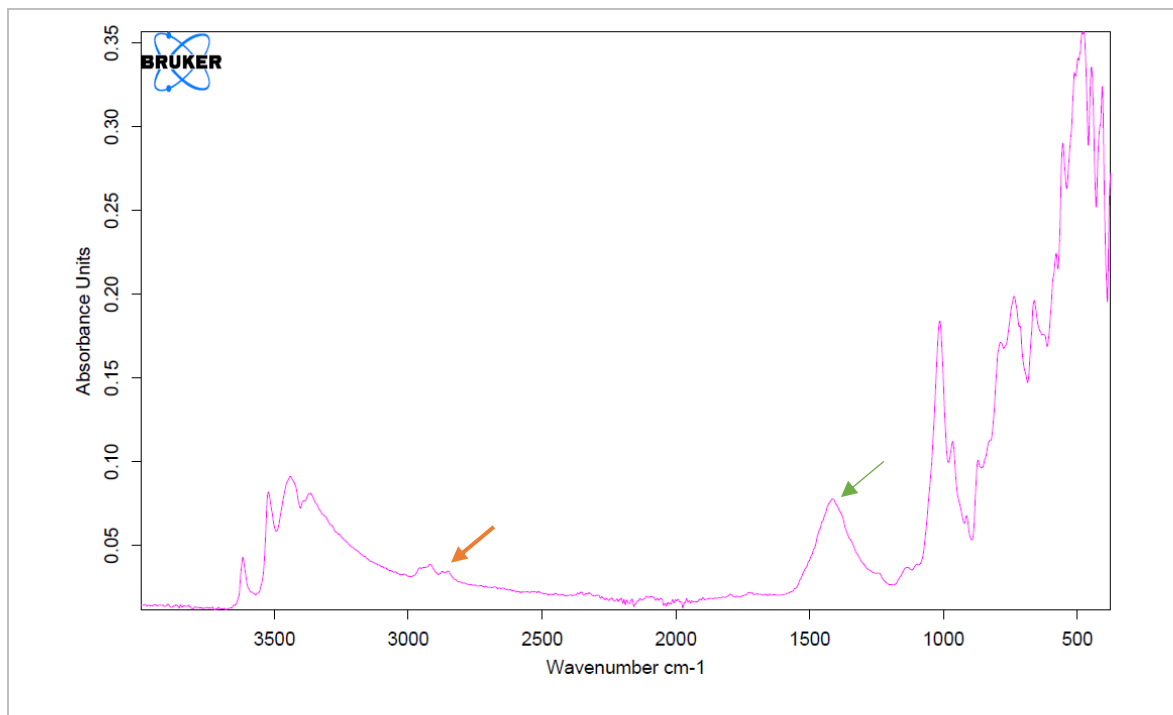


Figure 2. Spectrum of the cladding sample 8520/1 (pink) overlaid with a known spectrum of Alumina Trihydrate in Polyethylene carrier (blue), the strongest match from our internal library. As indicated by the orange arrow, the two peaks at 2919 cm^{-1} and 2850 cm^{-1} which are indicative of C-H stretching in Polyvinyl acetal. However, the C-H stretching peaks are tiny and almost insignificant, which indicates that polymer content is a trace level that is either a contaminant or a binder. As indicated by the green arrow, the strong peak at 1416 cm^{-1} is a characteristic peak of calcite (CaCO_3).





ASH RESIDUE TESTING

Methodology: Ashing residue testing was based on ASTM D 5630 - 13 "Standard Test Method for Ash Content in Plastics" using a muffle furnace. This technique enables quantification of the combustible and non-combustible fractions.

Ash Residue Results:

ExcelPlas Sample ID	Ash Residue Mass %
8520/1 - Result 1	69.3
8520/1 - Result 2	69.3





THERMO-GRAVIMETRIC ANALYSIS (TGA)

Methodology: TGA testing was based on ASTM E1131 - 08(2014) "Standard Test Method for Compositional Analysis by Thermogravimetry". This technique measures the weight loss of the material via thermal degradation with temperature. The weight loss profile enables identification of different components in the core of the cladding sample.

Atmosphere: Air
Heating rate and range: 10 °C/min up to 1000 °C

TGA Results:

Sample ID	Onset, °C	Peak Burn Rate Temperature, °C	Residue, %
8520/1	234.5	239.6, 314.6, 523.6, 726.7	60.3

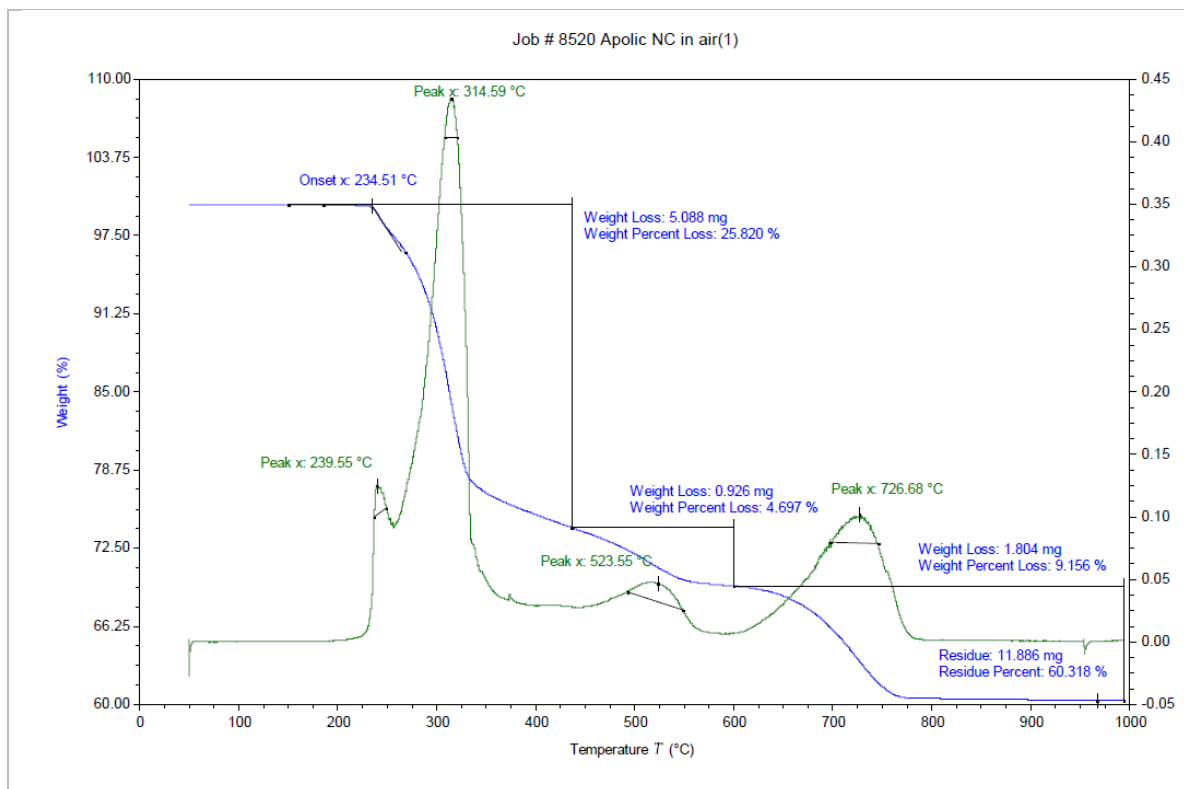


Figure 3. Thermo-gravimetric trace of sample 8520/1





CONCLUSION

The level of inert filler in each sample was determined using a combination of results obtained from quantitative ash data, thermogravimetry analysis (TGA), and FT-IR spectroscopy.

The amount of organic polymer in the sample is at a trace level and this low level concentration of polymer is not enough to make the panel combustible.

Based on the additional information supplied by the client dated on 25th February 2020, the cladding is “not deemed combustible” according to test report AS1530.1 (see attached certificate). Thus the ICA category is D.

Aluminium Composite Materials fall within four general categories ranging from A – high fire risk through to D – non-combustible, determined by the composition of the core materials as shown in Appendix A.

According to the Insurance Council of Australia (ICA), the categories of the cladding samples tested are shown in the table below.

ExcelPlas Sample ID	ICA Category	Measured Inert filler (%) ¹	Organic polymer (%) ¹
8520/1	D	~97 ²	~3 ²

Notes:

1. These results are based on a single sample submitted for testing. This does not necessarily indicate all panels on site have similar composition, particularly if there are panels from different batch runs and/or suppliers.
2. The percentage of organic polymer was determined from the infrared spectrum obtained and due to only having trace levels of the polymer the results for inert filler and organic polymer are approximate values.





Appendix A: Insurance Council of Australia

Notes from Insurance Council of Australia website:

<http://www.insurancecouncil.com.au/issues-submissions/issues/insurance-industry-aluminium-composite-panels-residual-hazard-identificationreporting-protocol>

Insurers have observed that ACPs typically come in four general categories defined by the composition of their core materials ranging from A – High fire risk, through to D – non-combustible as follows:

Category	Polymer Percentage ^[1]	Polymer%	Inert Filler%
A	30-100% Polymer and 0-70% inert materials	30-100%	0-70%
B	8-29% Polymer and 71-92% inert materials	8-29%	71-92%
C	1-7% Polymer and 93-99% inert materials	1-7%	93-99%
D	0% Polymer and 100% inert materials or deemed non-combustible by the NCC	0%	100%

^[1] Polymer including all types of flammable polymers



**Terms & Conditions:**

The testing herein is based upon accepted industry practice as well as the test methods listed.

Test results reported herein do not apply to samples other than those tested.

ExcelPlas neither accepts responsibility for nor makes claim as to the final use and purpose of the material.

It is up to the client to validate the suitability of any material recommendations contained in this report by conducting proper product field trials to establish 'fitness for purpose' to their satisfaction.

We believe the conclusions and recommendations contained in this report were reasonable and appropriate at the time of issue of the report. However, please note that fundamental input assumptions upon which this report is based may change with time. It is the user's responsibility to ensure that input assumptions remain valid.

ExcelPlas shall not be liable for any losses, costs, damages or expenses incurred by the recipient or any other person or entity resulting from the use of any information or interpretation given in this report. The Client shall indemnify ExcelPlas Pty Ltd, its officers, representatives and employees from and against any claims made by third parties against the Client or ExcelPlas Pty Ltd arising from damage claimed to be suffered by those third parties (including without limitation any third party utilising the Results with the Client's authorisation express or implied) or any other person to whom the Client has made the Results available.

This report is based in part on information which was provided to us by the client and/or others. We do not warrant or guarantee the accuracy of this information.

ExcelPlas observes and maintains client confidentiality.

This report must be read in its entirety. Please note that this includes all reports and appendices carrying this report number as well as any related report numbers. The Terms and Conditions must also be reproduced with every copy.

ExcelPlas limits reproduction of this report, except in full, without prior approval of ExcelPlas.

This report is prepared solely for the use of the person or company to whom it is addressed. No responsibility or liability to any third party is accepted for any damages howsoever arising out of the use of this report by any third party.

Unless otherwise negotiated with the client, test samples will be disposed of 90 days after the report has been issued. In the case of large samples (greater than approximately half metre square), the client needs to arrange for sample pick up or disposal (cost will apply to client).

ExcelPlas Pty Ltd is dedicated to Customer Service and welcomes your feedback. Please email lab@excelplas.com or visit feedback.excelplas.com to send us your suggestions or comments.

We thank you for your time

